

# Super-C™

Chromium Carbide Plate Abrasion Resistant

Super-C™ is a chromium carbide overlay, wear-resistant plate with a mild steel base for weldability. Tricon's unique cladding process produces a harder, tougher, and more wear-resistant surface, making Super-C™ superior to any other chromium carbide plate available on the market.

## Benefits

### Better Wear Resistance

Improved wear resistance for high impact applications.  
Highest concentration of chromium carbides available

### Attachment

The standard mild steel base plate can be easily welded, bolted, or studded to existing structures.

### Base Plate Materials

In addition to the standard mild steel base plate, Super-C™ can be applied to nickel-based, stainless, and other steel substrates.

### Herringbone Pattern

Proprietary herringbone pattern breaks up flow channels and premature plate wear, regardless of installation direction.

### Carbides

Maximum carbide concentration and alignment throughout the proprietary process makes Super-C™ the most wear-resistant overlay plate on the market.

### Plate Sizes

Standard size stock is 96" by 240", 96" by 120" and 96" by 48". Available in thickness ranges from 3/8" to 1". Non-standard widths and thicknesses available upon request.

## Applications

Flat back elbows

Crusher liners

Grizzly bars

Shot blast cabinet liners

Truck bed and dozer liners

Chutes

Screw conveyors

Cyclones

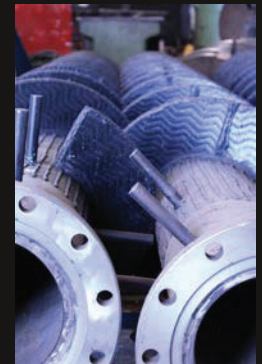
Fan blades and housings

Chipper hood liners

Road construction skis

Cutter box liners

Coke pusher liners



Birmingham, AL  
(800) 633-6054  
(205) 956-2567

University Park, IL  
(888) 932-3427  
(708) 235-8719

Elko, NV  
(800) 833-8385  
(775) 738-1242



© 2016 Tricon Wear Solutions | All Rights Reserved  
[www.triconwearsolutions.com](http://www.triconwearsolutions.com)